



16/12/21

Annwyl Riant / Warcheidwad / Ddisgybl,

Oherwydd effaith bosibl yr amrywiad Covid-19 Omicron dros yr wythnosau nesaf, mae Llywodraeth Cymru wedi gorfodi pob ysgol yng Nghymru i gymryd dau ddiwrnod cyntaf y tymor newydd (dydd Mawrth 4ydd a dydd Mercher 5ed Ionawr) fel diwrnodau cynllunio ychwanegol i baratoi ar gyfer unrhyw darfu bosib fydd ar ddysgu ac addysgu.

Bydd y diwrnodau hyn yn rhoi amser ychwanegol i'r ysgol asesu'r sefyllfa staffio, ailystyried asesiadau risg ac rhoi unrhyw fesurau angenrheidiol ar waith i gefnogi dychweliad ein dysgwyr.

Blaenoriaeth ein hysgol yw lleihau'r tarfu ar addysg ein disgyblion a chynnal dysgu wyneb yn wyneb yn yr ystafell ddosbarth mewn ffordd ddiogel i bawb. Fodd bynnag, er mwyn amddiffyn ein disgyblion a'n staff, gofynnir i ni hefyd baratoi ar gyfer cyfnod o ddysgu o bell pe bai achosion yn lleol yn arwain at absenoldeb sylweddol staff neu ddisgyblion.

Mae hon yn sefyllfa sy'n symud yn gyflym iawn felly byddwn hefyd yn sicrhau os oes unrhyw ddiweddariadau pellach dros y gwyliau, y byddwn yn rhannu'r rhain cyn dychwelyd i'r ysgol.

Roedd disgwyl i'r disgyblion ddychwelyd i'r ysgol ar Ionawr 5ed, byddant nawr yn dychwelyd **ddydd lau, Ionawr 6ed 2022. Ni fydd yr ysgol ar agor i UNRHYW ddisgyblion ar y 4ydd neu'r 5ed o Ionawr.** Bydd y diwrnod Hyfforddiant Mewn Swydd i staff yn cael ei aildrefnu ar gyfer hwyrach yn y flwyddyn academaidd.

Byddwn yn gweithredu ar lefel risg 'uchel iawn', felly mae'n rhaid i ni ofyn i chi fel rhieni / gwarcheidwaid i gadw at y canlynol:

Dim ond **UN** oedolyn ddylai dod gyda'i blentyn / casglu ei blant o'r ysgol.

Dylai plant gyrraedd yr ysgol erbyn **8:55yb** ar yr hwyraf:

Ni ddylai rhieni / gwarcheidwaid ymgynnull y tu allan i'r ysgol nac aros ar safle'r ysgol ar ôl i'w plentyn / plant gael eu trosglwyddo i ofal aelod o staff. Dylai'r rhai sydd â mwy nag un plentyn yn yr ysgol gasglu eu plant am 3:15 pm. Os mai dim ond un plentyn sydd gennych yn yr ysgol, **PEIDIWCH** â chyrraedd cyn 3:25 yp.

Dylai pob oedolyn ddilyn y system unffordd.

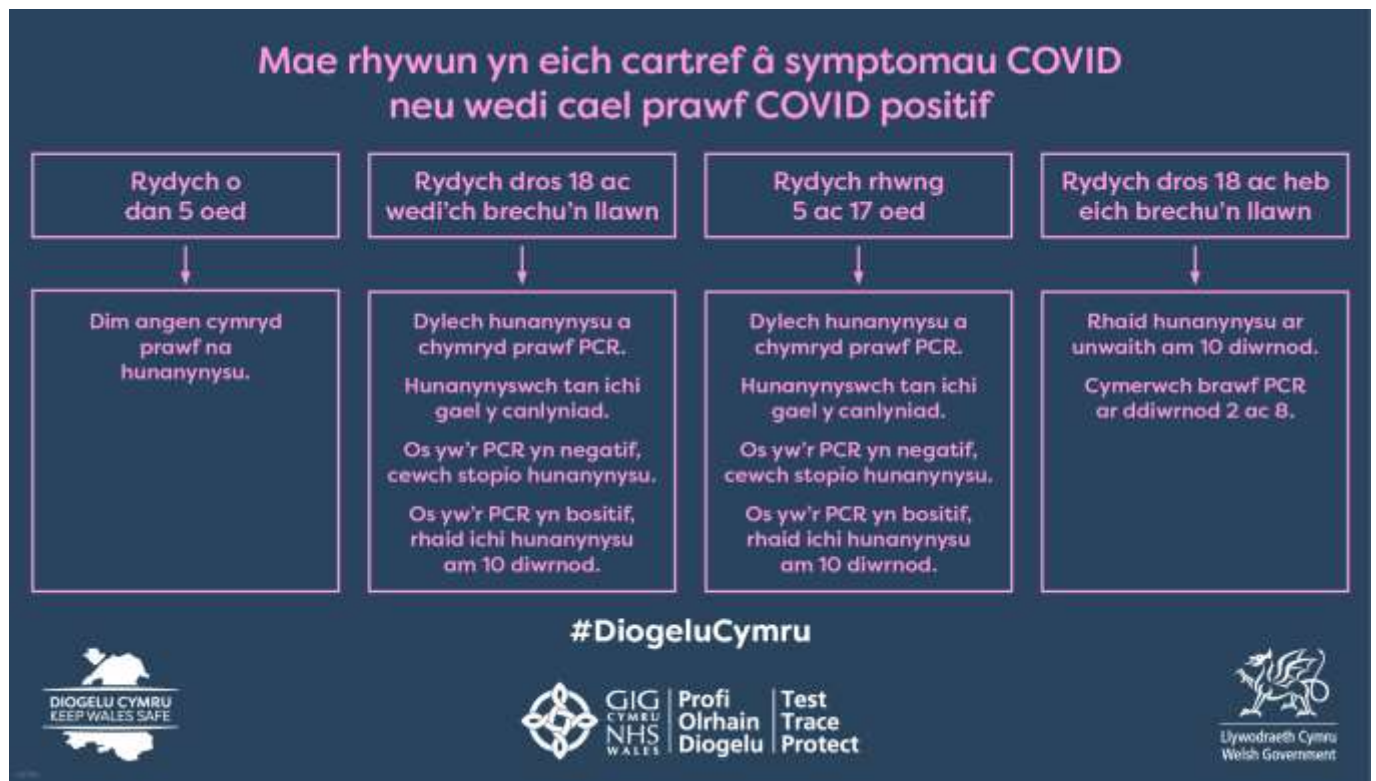
Dylai pob oedolyn, oni bai ei fod wedi'i eithrio, wisgo gorchudd wyneb.

Os yw'ch plentyn yn arddangos unrhyw symptomau, peidiwch â'u hanfon i'r ysgol a threfnwch prawf PCR ar unwaith (ar hyn o bryd nid yw'n ofynnol i blant dan 5 oed gael prawf PCR ond dylent aros gartref). **NI FYDDWN** yn derbyn canlyniad Prawf 'Lateral Flow'.

Os oes angen i chi siarad ag athro eich plentyn, gofynnwn ichi gysylltu â'r ysgol drwy'r adran 'Cysylltu â ni' ar wefan yr ysgol a byddant yn cysylltu cyn gynted â phosibl. Oni bai

ei fod yn fater brys, gofynnwn i chi beidio gofyn i drafod unrhyw faterion gyda'r staff wrth adael neu gasglu eich plentyn / plant.

Dyma'r canllawiau cyfredol am hunan-ynysu:



Fel o'r blaen, byddwn yn gwneud ein gorau glas i sicrhau bod yr holl fesurau angenrheidiol yn cael eu cymryd i gadw ein dysgwyr yn ddiogel. Bydd hwn yn gofyn am gydweithrediad cymuned gyfan yr ysgol a rhaid inni ofyn i bawb ddilyn y cyfarwyddiadau a rennir uchod. Efallai y bydd angen i ni addasu'r rhain yn unol ag unrhyw ganllawiau newydd a dderbynnir gan yr Awdurdod Lleol neu Lywodraeth Cymru.

Yn gywir

Miss Evans a holl staff Ysgol Gymraeg Cwmbrân



16/12/21

Dear Parent / Guardian / Pupil,

Due to the potential impact of the Covid-19 Omicron variant over the next few weeks, the Welsh Government have instructed every school in Wales to take the first two days of the new term (Tuesday 4th and Wednesday 5th of January) as additional planning days to prepare for potential disruption to learning and teaching.

These days will give the school time extra time to assess staffing capacity, reconsider risk assessments and mitigations and put any necessary measures in place to support the return of learners.

Our school's priority is to always minimise disruption to our pupils' education and maintain face to face learning in the classroom in a safe way for everyone. However, to protect our pupils and staff we are also being asked to prepare for a period of remote learning should cases locally result in significant staff or pupil absence.

This is a very fast-moving situation so we will also ensure that if there are any further updates over the holiday period, we will share these in advance of the scheduled return to school.

Pupils were due to return to school on January 5th, they will now return on **Thursday, January 6th 2022. The school will not be open for ANY pupils on the 4th or 5th January.** The Staff Training Day which was due to take place on the 4th January will now take place later in the academic year.

We will be operating at a 'very high' risk level. We must therefore ask you as parent/guardians to adhere to the following:

Only **ONE** adult should accompany and collect their child/children to/from school.

Children should arrive in school by **8:55am** at the latest.

Parents /guardians should not congregate outside the school or remain on the school site after their child/children have been transferred into the care of a member of staff.

Those with more than one child at school, should collect their children at 3:15pm. If you have only one child in the school, please **DO NOT** arrive before 3:25pm.

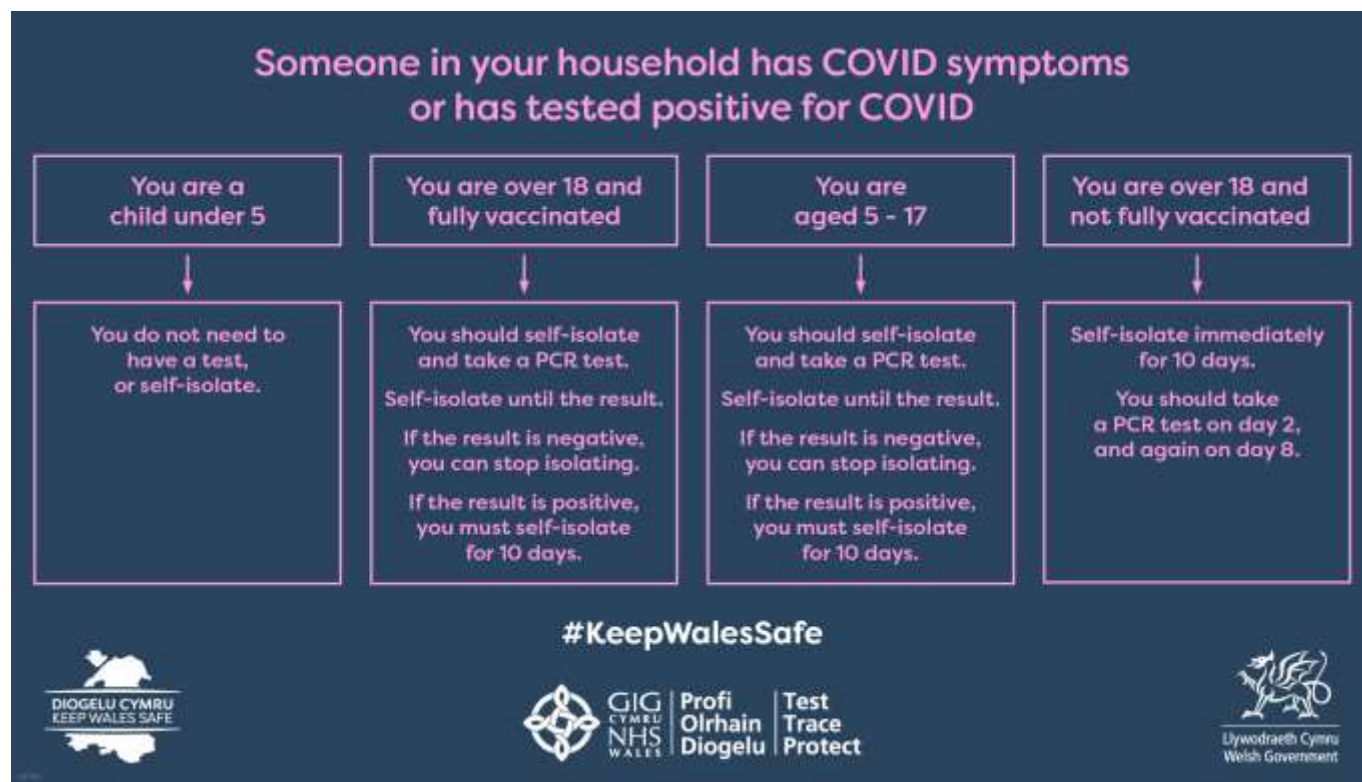
All adults should follow the one way system.

All adults, unless exempt, should wear a face covering.

If your child is displaying any potential symptoms, do not send them to school and book a PCR test immediately (Under 5s are currently not required to have a PCR test but should remain at home). We **WILL NOT** accept the result of a Lateral Flow Test.

If you need to speak to you child's teacher, we ask that you contact the school via the 'Contact us' section on the school website and they will make contact as soon as possible. We ask that unless it is urgent, you do not ask to discuss any issues with the staff when dropping off or collecting your child/ren.

This is the current guidance regarding self-isolation:



As always, we will do our utmost to ensure that all necessary measures are taken to keep our learners safe. This will require the cooperation of the whole school community and we must ask that the directives shared above are followed by all. We may need to adapt these in line with any new guidance received from the Local Authority or Welsh Government.

Yours sincerely,

Miss Evans and all the staff at Ysgol Gymraeg Cwmbrân.